



68 Musters Road,
Ruddington, NG11 6HZ

68 Musters Road, Ruddington, NG11 6HZ

This extended and beautifully presented detached home provides versatile accommodation that will easily suit the needs of a busy family.

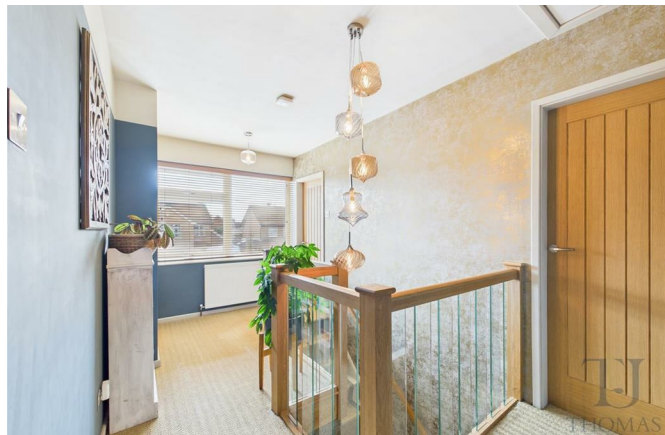
Arranged over two floors, the spacious accommodation includes; a welcoming reception hallway, a dual aspect lounge, a study/ground floor bedroom that will lend itself to a multitude of uses, a modern breakfast kitchen with French doors opening to the rear garden, plus a utility room, and a wc on the ground floor, with the first floor landing giving access to four good size bedrooms, and the four piece family bathroom.

Benefiting from gas central heating, with NEST control and double glazing, the property has a well maintained enclosed garden to the rear (complete with a gym/study), further gardens to the front, plus a driveway providing off road parking for a number of vehicles, with an EV charger.

Situated close to the heart of the sought after South Nottinghamshire village of Ruddington, the property is within easy reach of a wealth of local facilities including shops, churches, a doctors surgery, restaurants and a country park. Main road routes and local transport links give access to Nottingham, Leicester and neighbouring villages.

Early viewing is essential.

Offers Over £595,000





ACCOMMODATION

The solid oak entrance door opens to the entrance hallway. The welcoming entrance hallway has Velux windows allowing plenty of light to flow in, stairs rising to the first floor, an under stairs storage cupboard, and doors opening to the lounge, the breakfast kitchen, and the utility room.

The utility room has space and plumbing for a washing machine, and space for a dryer. A door leads into the ground floor wc from here.

The ground floor wc has a wash hand basin, and a low flush wc. There is tiled flooring, and a door into the study/ground floor bedroom.

The study/studio (converted from the original garage) provides a versatile space that would easily lend itself to a multitude of uses to suit the needs of a busy family! This room has a window to the front, and a door opening to the side.

The dual aspect lounge has windows to the front and rear, a feature fireplace, a ceiling light point and wall lights, and double doors opening to the breakfast kitchen.

The bright breakfast kitchen has a range of modern wall, drawer and base units, roll edge work surfaces, a sink and drainer unit with Quooker tap over, integrated dishwasher, plus a built in double oven, and a five ring gas hob with an extractor hood over. There is a window to the rear, and French doors opening to the rear garden.

On reaching the first floor, the landing has doors into all four bedrooms, and the family bathroom.

Bedroom one has a window to the rear.

Bedroom two has a window to the front, and a range of built in wardrobes.

Bedroom three has two windows to the front.

Currently used as a study, bedroom four has a window to the rear.

Completing the accommodation, the family bathroom has a bath, a separate shower cubicle, a wash hand basin, and a low flush wc.

OUTSIDE

At the front of the property the driveway provides off road parking for a number of vehicles. A block paved pathway leads to the entrance door, and to the side and rear. There is external lighting, a number of seating areas, and attractive shrub beds.

The well maintained rear garden includes three seating areas, a lawned area, and mature shrubs and trees. Fully enclosed, the garden also houses a storage shed, a greenhouse, a GYM/STUDY (with two Velux windows, and ceiling light points), and a car port area which is now used for storage only.

Council Tax Band

Council Tax Band E, Rushcliffe Borough Council.

Amount Payable 2025/2026 £3,152.91.

Referral Arrangement Note

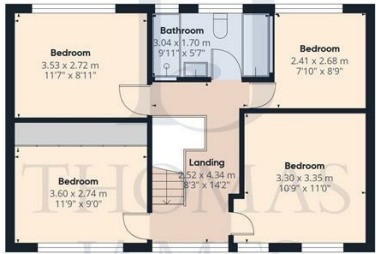
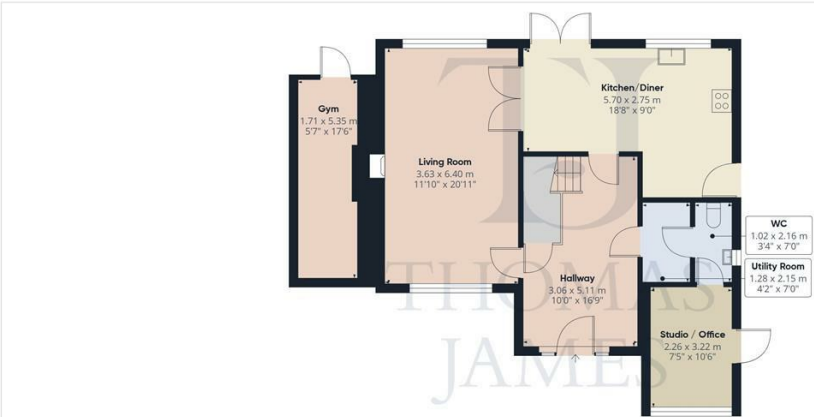
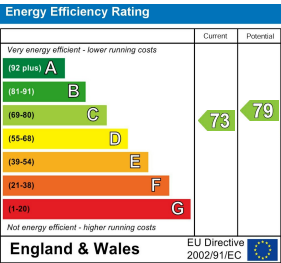
Thomas James Estate Agents always refer sellers (and will offer to refer buyers) to Premier Property Lawyers, Ives & Co, and Curtis & Parkinson for conveyancing services (as above). It is your decision as to whether or not you choose to deal with these conveyancers. Should you decide to use the conveyancers named above, you should know that Thomas James Estate Agents would receive a referral fee of between £120 and £240 including VAT from them, for recommending you to them.

DISCLAIMER NOTES

These sales particulars have been prepared by Thomas James Estate Agents on the instruction of the vendor. Services, equipment and fittings mentioned in these particulars have NOT been tested, and as such, no warranties can be given. Prospective purchasers are advised to make their own enquiries regarding such matters. These sales particulars are produced in good faith and are not intended to form part of a contract. Whilst Thomas James Estate Agents have taken care in obtaining internal measurements, they should only be regarded as approximate.

MONEY LAUNDERING

Under the Protecting Against Money Laundering and the Proceeds of Crime Act 2002, Thomas James require any successful purchasers proceeding with a purchase to provide two forms of identification i.e passport or photocard driving license and a recent utility bill. This evidence will be required prior to Thomas James instructing solicitors in the purchase or the sale of a property.

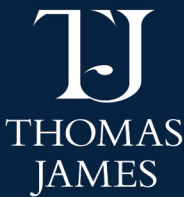


Approximate total area⁽¹⁾
134.1 m²
1445 ft²

(1) Excluding balconies and terraces

Calculations reference the RICS IPMS 3C standard. Measurements are approximate and not to scale. This floor plan is intended for illustration only.

GIRAFFE360



Thomas James Estate Agents, 20 High Street, Ruddington, Nottinghamshire, NG11 6EH

Tel: 0115 9844660 | Email: ruddington@tjea.com | Web: www.tjea.com

These particulars, whilst believed to be accurate are set out as a general outline only for guidance and do not constitute any part of an offer or contract. Intending purchasers should not rely on them as statements of representation of fact, but must satisfy themselves by inspection or otherwise as to their accuracy. No person in this firm's employment has the authority to make or give any representation or warranty in respect of the property.

